



**Innovation In and  
Out of Parlour**

## **USB to Meridian Converter Manual**

**Date - September 2013**



## About the USB to Meridian Converter

The USB to Meridian Converter has been designed to be plugged directly in to a USB port on a personal computer. The driver disk supplied contains drivers for Microsoft Windows in both the 32bit and 64bit versions, the driver disk will identify which version is required and install the correct one.

## Specifications

- USB: *USB 1.1 Compatible device*
- Operating Systems: *Windows XP, Windows Vista, Windows 7, Windows 8*

## Front Cover

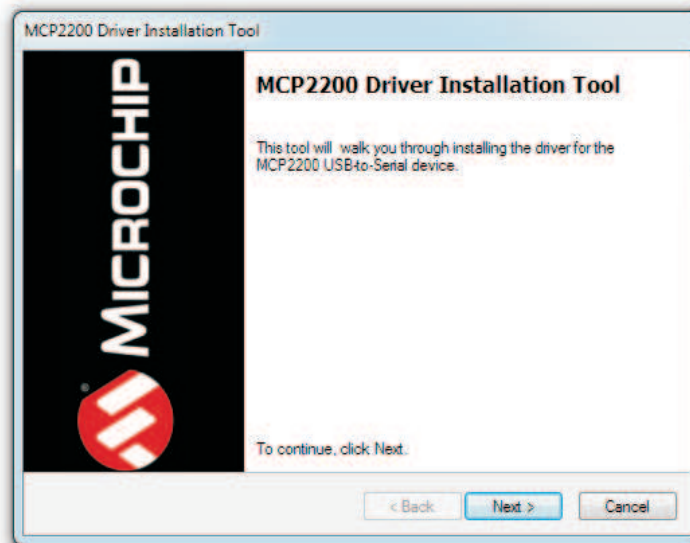




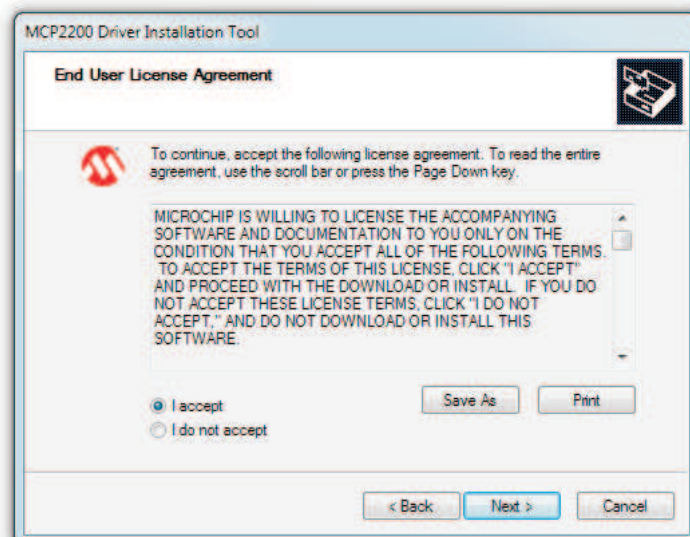
## Driver Installation Instructions

The USB to Meridian Driver must be installed from the provided CR-ROM before connecting the USB to Meridian Converter. To Install the driver, put the CD-ROM into the computer's CD-ROM drive. The disk should Autorun and load the correct installer. If the Autorun is disabled or cancelled, the driver installation wizard can be started by browsing to the CD-ROM and running the ATL.AutorunLauncher.exe in the root of the CD-ROM drive. Please Note: A Prompt may ask for permission to run the program, this is normal, and the Yes or Allow button should be clicked depending on the operating system.

Once the installer is loaded the window below will be shown:



The Next button should be clicked to start the installation process. The End User License Agreement screen will be shown after the next button is clicked. This screen is shown below;

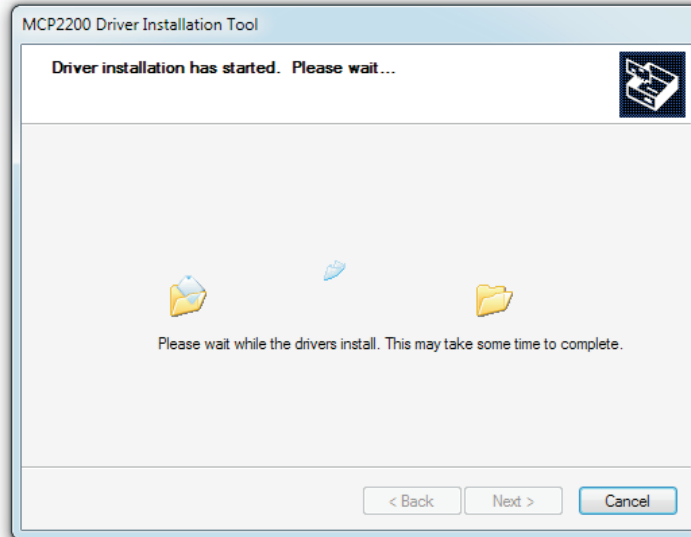


In order to continue with the installation, the "I accept" radio button will need to be highlighted, and then the Next button clicked. Please Note: The computer chip used in the USB to Meridian Converter is designed and manufactured by Microchip, the software drivers supplied are created by them.

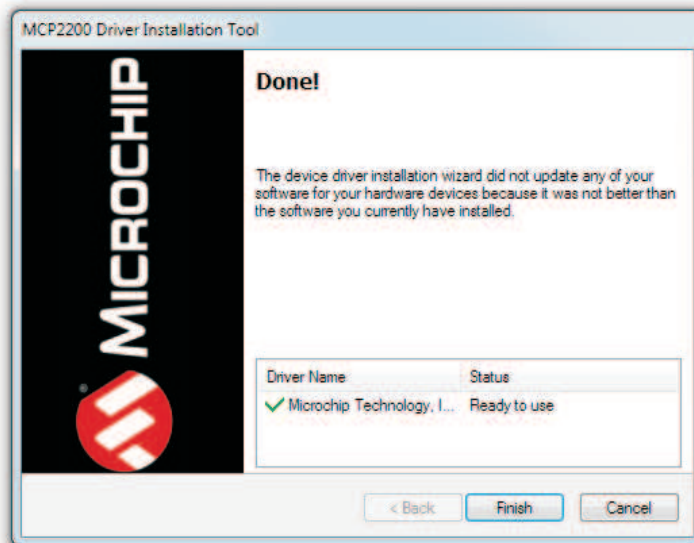


### Driver Installation Instructions Continued

The installation wizard will next install the driver for the USB to Meridian Converter, the screen shown below shows the driver being installed;



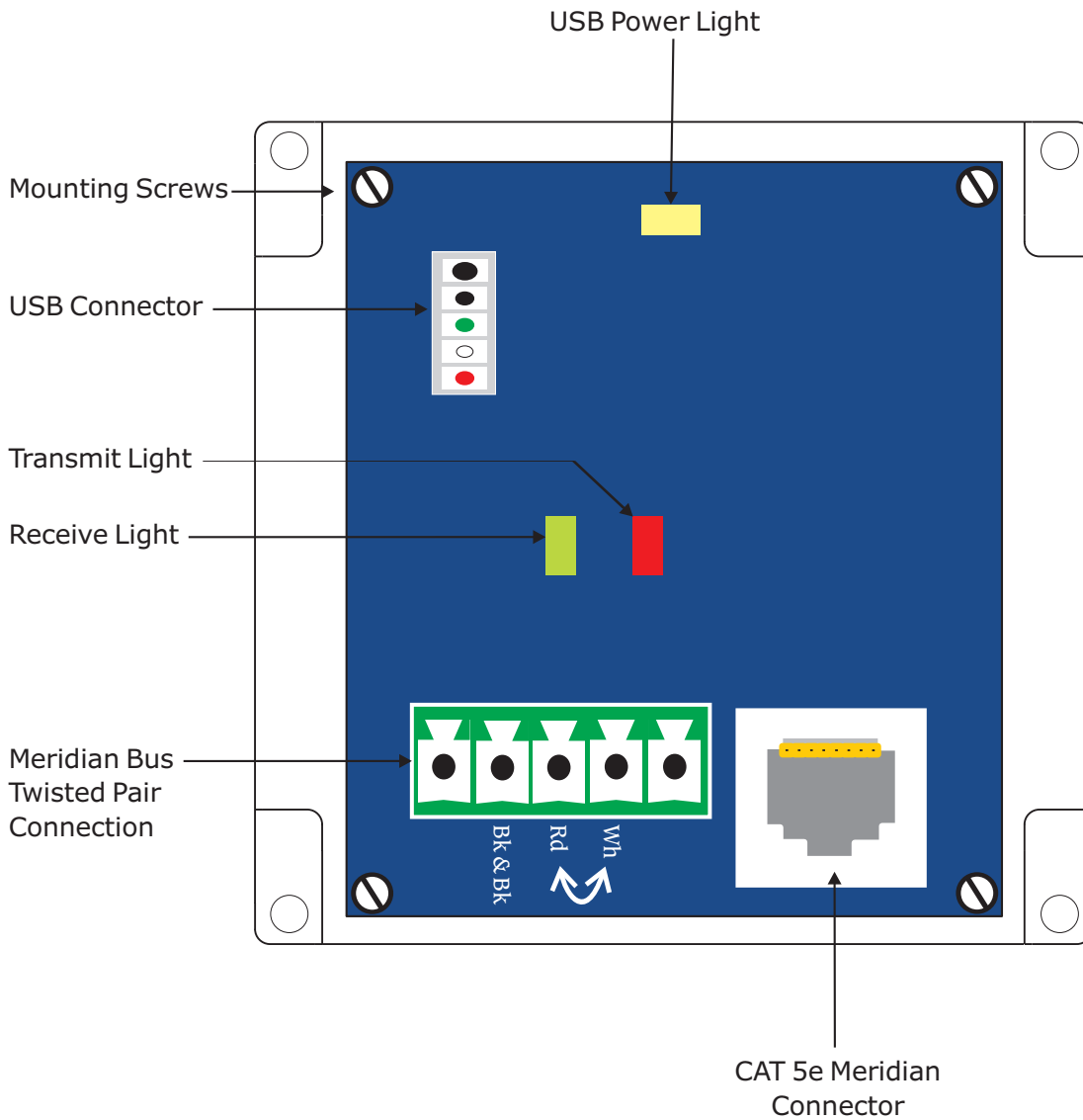
Once the driver has been installed, the screen will change to the one shown below:



The Finish button should be clicked to finish the installation process.

### Wiring Installation Instructions

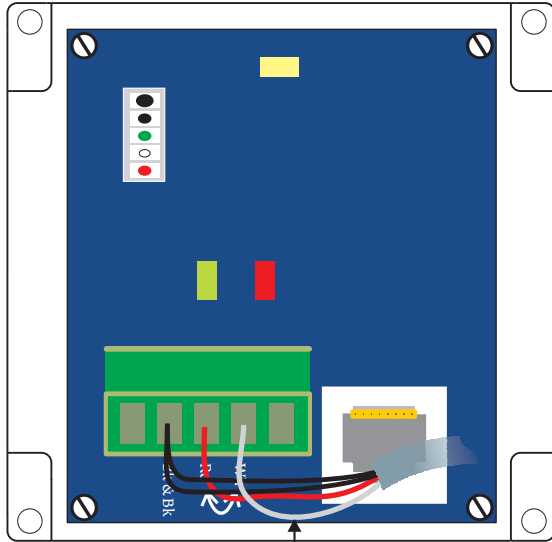
The diagram below shows the layout of the USB to Meridian PCB, the wiring for the Meridian Bus can be carried out in two separate ways, either using a CAT 5e connection to a milk meter connections PCB, or with a twisted pair connection in to the ATL Micro Marque 3s control.



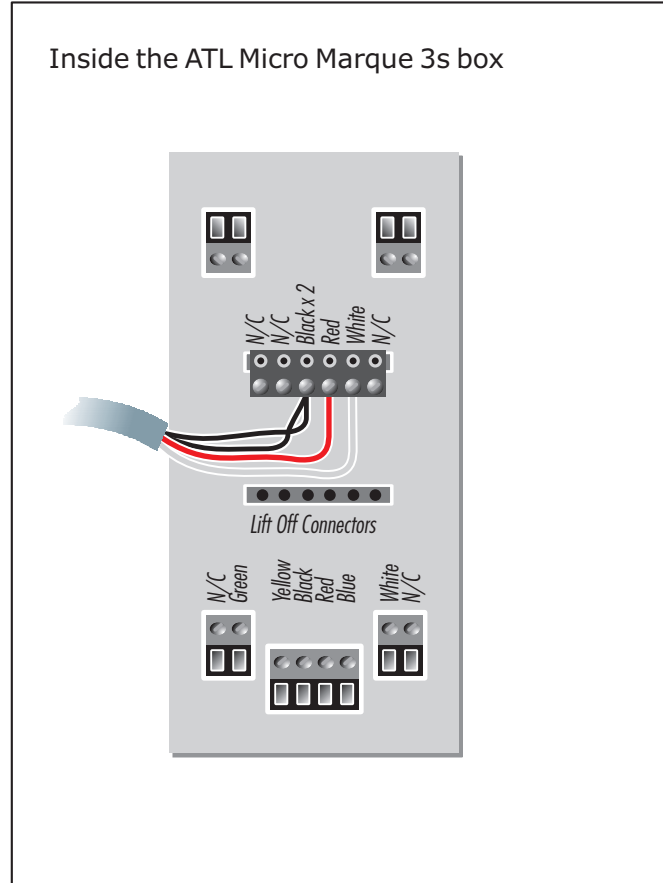


### Meridian Bus connection using the 5-way twisted pair connector

The diagram below shows the wiring connections for the twisted pair connection to the ATL Micro Marque 3s control. The twisted pair should be connected as shown below.

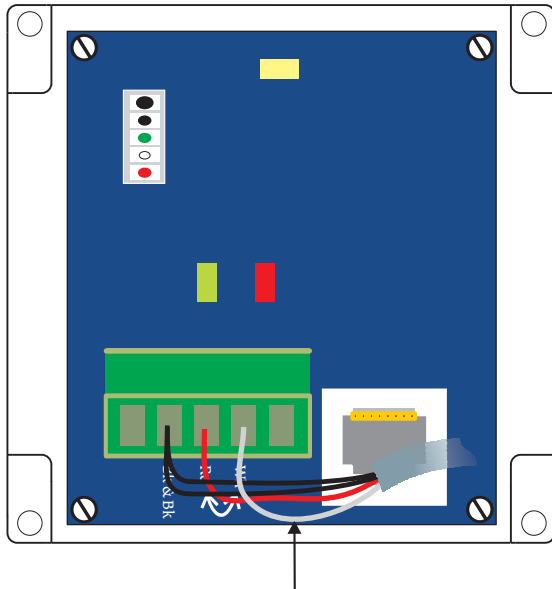


Meridian Bus: From Remote MicroMarque3S  
Use only twisted pair cable supplied. Do not run close to or across AC mains or switching cables. Keep the run as short as possible.

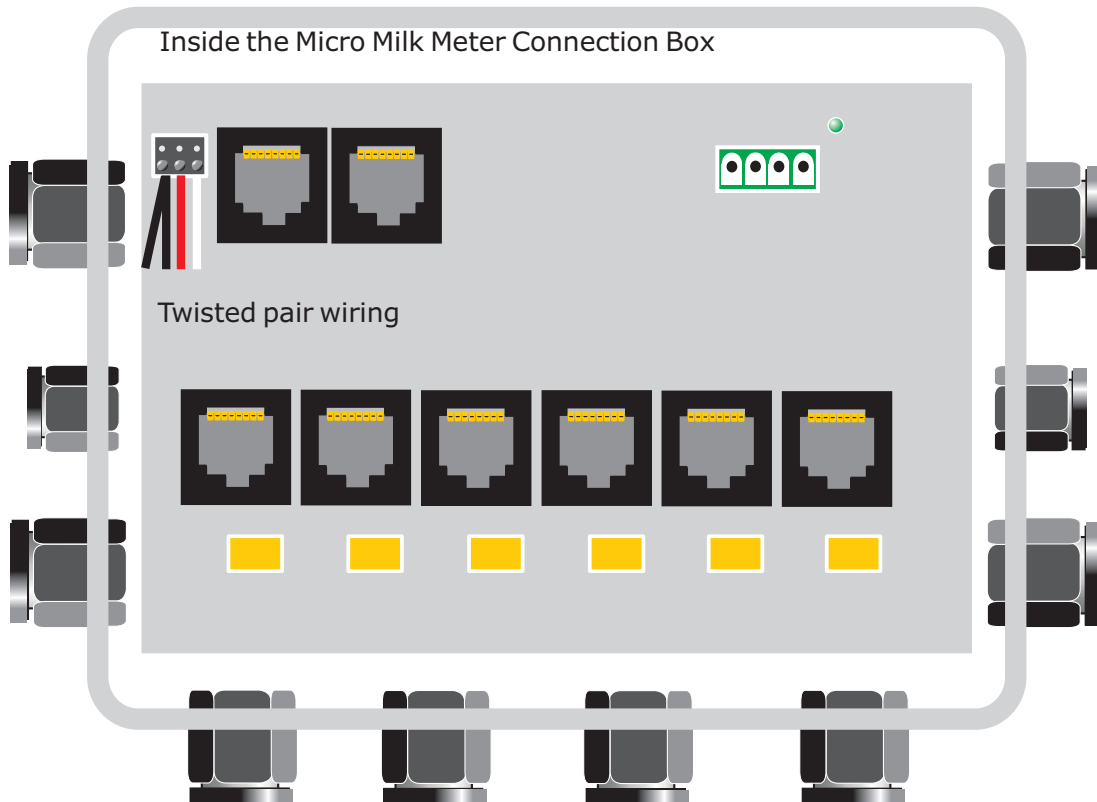


### Meridian Bus connection using Twisted Pair connector into Micro Milk Meter Connections Box

The diagram below shows the wiring connections for the twisted pair connection to the Micro Milk Meter connections box.

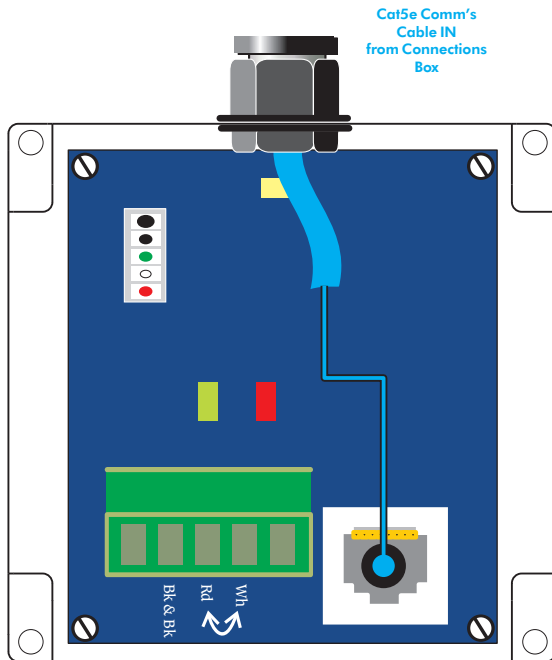


Meridian Bus: From Remote MicroMarque3S  
Use only twisted pair cable supplied. Do not run close to or across AC mains or switching cables. Keep the run as short as possible.



### Meridian Bus connection using Cat5e connector

The diagram below shows the wiring connections for the Cat5e connection to the Micro Milk Meter connections box.



Meridian Bus: From Remote Micro Milk Meter Connections Box.  
Use only Cat5e cable supplied. Do not run close to or across AC  
mains or switching cables. Keep the run as short as possible.

