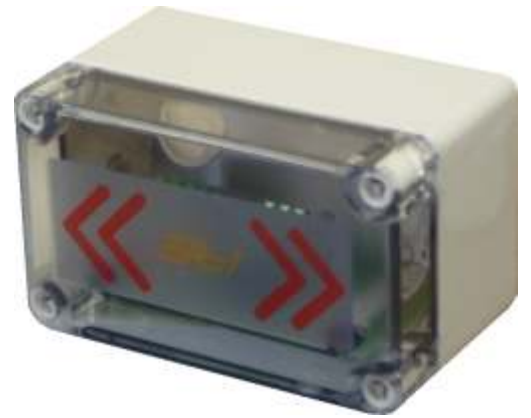




# SWING-TO-START BOX INSTALLATION MANUAL

Version - March 2006



Part Number - 39-0045



# SWING-TO-START BOX INSTALLATION MANUAL: INDEX

## GOOD PRACTICE: Mains Supply.

- A separate mains supply and earth running directly from the customer meter is essential.
- Avoid routing the mains cable to the power supply close to other supplies especially those providing intermittent current- motors that are starting and stopping continually or high power heaters with thermostatic control.
- Terminate in a sealed, fused, double pole switched outlet fitted with a 13Amp (BS 1362 Standard) fuse or trip. A 3-pin ring main socket is not suitable in parlour conditions. All mains cabling must be contained in a firmly secured durable conduit.
- All mains work should be referred to a Qualified Electrician.

## Power Supply: Siting.

- Fix the power supply to a wall or suitable brackets in a well ventilated area sufficiently high to avoid physical contact or damage, leaving a gap of at least 250mm (10") between the top of the power supply casing and the ceiling.
- Position the power supply so that the output (low DC voltage) cables are as short as possible even if this means extending the mains supply.

## ATL Power Supply: Output Voltages.

- ATL power supply outputs are factory set and should not be adjusted. For a 230volt mains supply the DC outputs should be:

Milk Meter Display Unit Control Supply: Nominal 12volts.

Connections Box Supply: Nominal 12volts

Solenoid Box Supply: Nominal 12volts

- There are two indicators fitted to the base of the power supply casing; red indicates that the mains is present and green that the supply is available.

## Control and Cables and Conduit.

- All connectors and glands are supplied.
- Entries must be made into the bottom of power supply or control casings but never into the top. This will invalidate the warranty.
- Keep multicore cables away from other cables especially those carrying mains or heavy currents. Cross only at 90° where necessary and do not enclose in conduit with other cables.

## INDEX

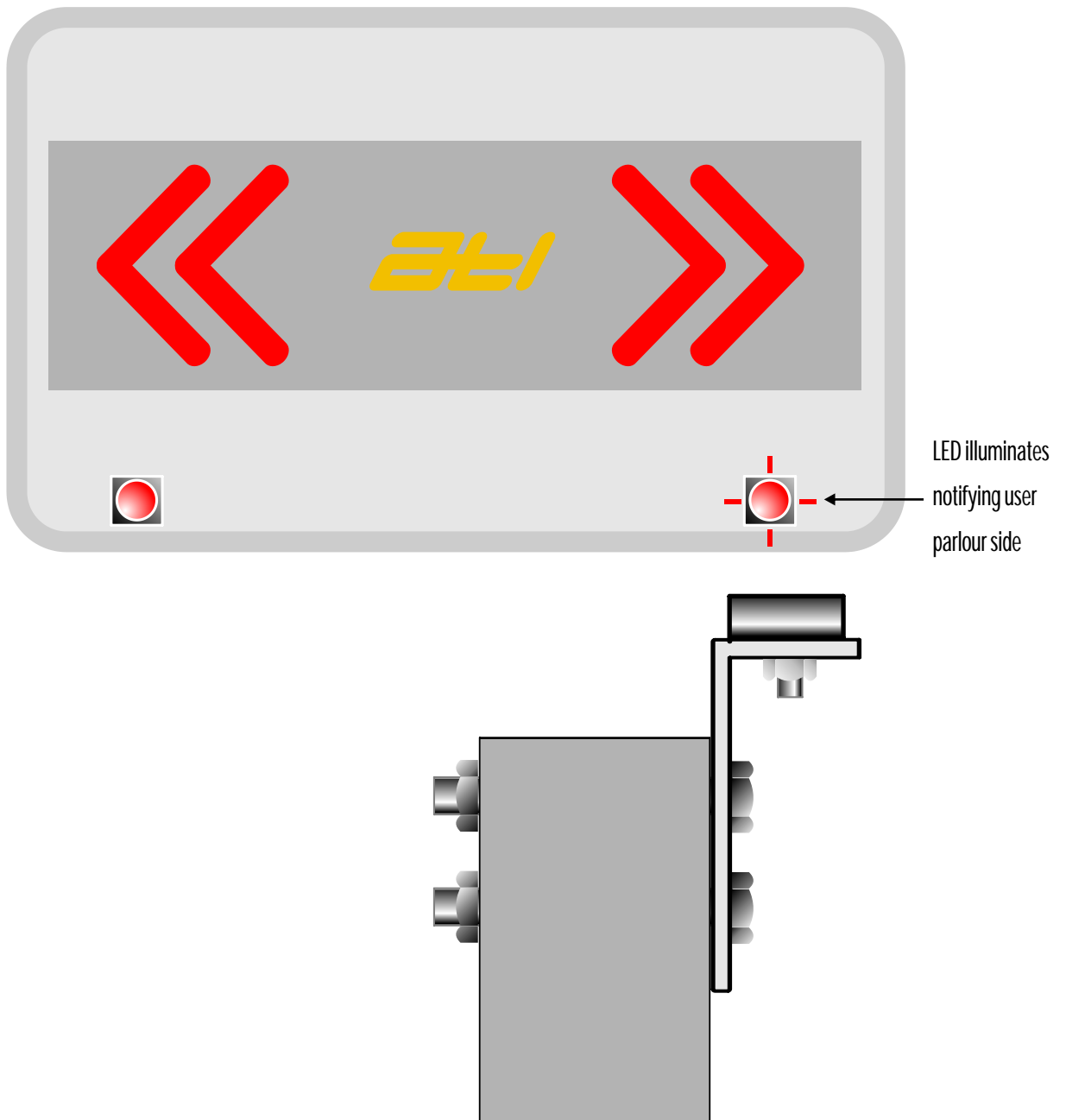
Good Practice:	Index
The Swing-To-Start Box	1
The Swing-To-Start Box Installation	2
Swing-To-Start Magnet with Bracket Installation	3
Swing-To-Start Magnet without Bracket Installation	3
Swing-To-Start Wiring 1	4
Swing-To-Start Wiring 2	5



# SWING-TO-START BOX INSTALLATION MANUAL: 1

## The Swing-To-Start Box

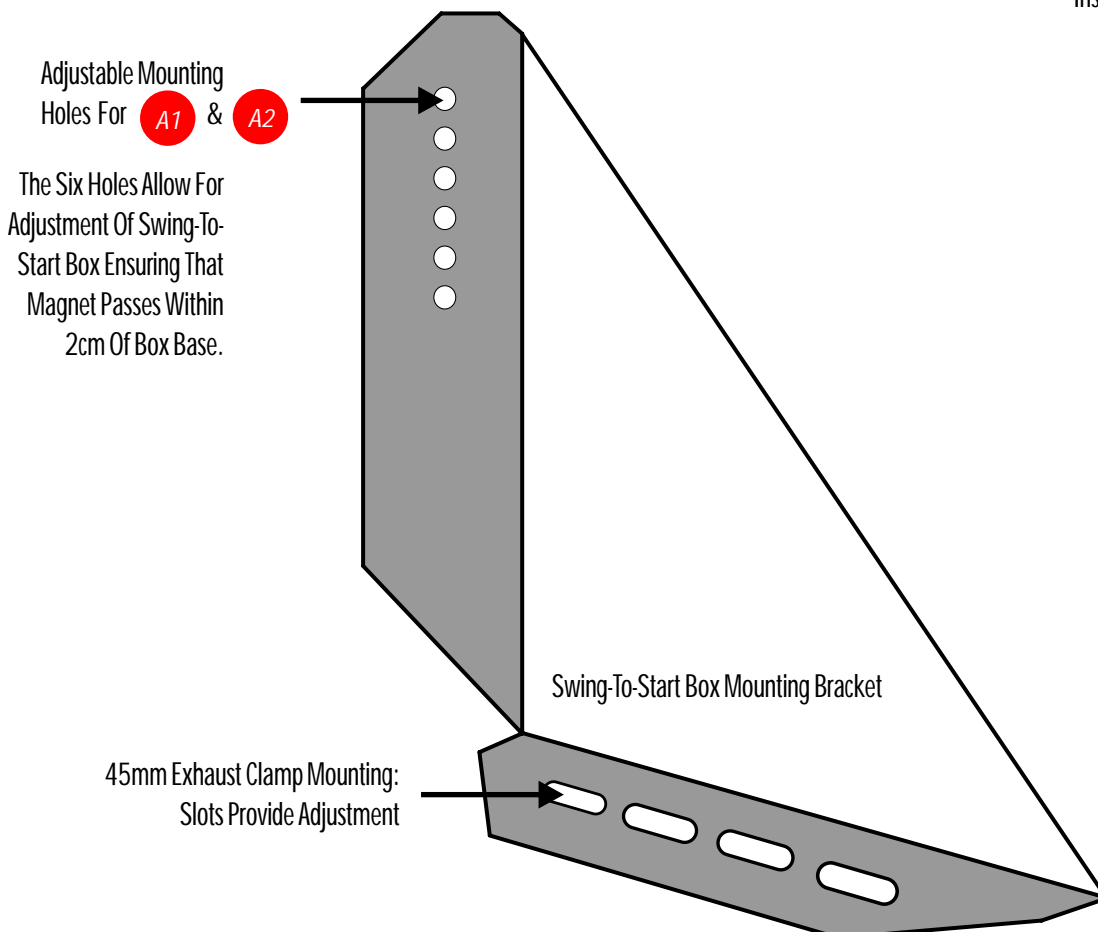
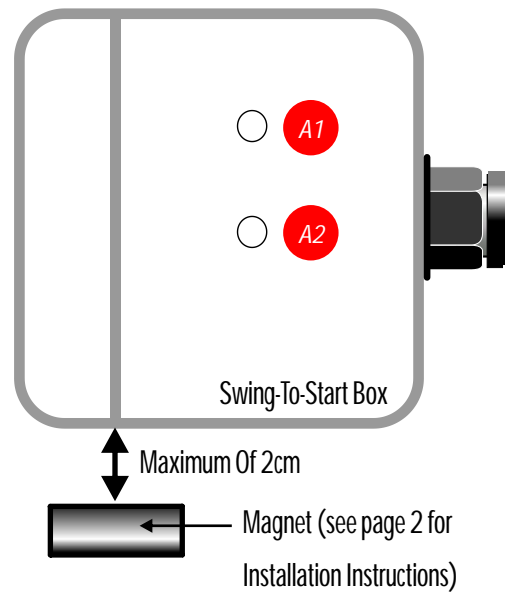
The ATL swing-to-start box is designed to be used on swingover parlours to electronically notify the MicroMarque3S control of the side the milk meter is currently being used on; thus making the process automatic. The swing-to-start box can be used in conjunction with non-ATL products or with the MicroMarque3S (NB - if used in conjunction with the MicroMarque3S, there is a maximum parlour size of 48/96).





# SWING-TO-START BOX INSTALLATION MANUAL: 2

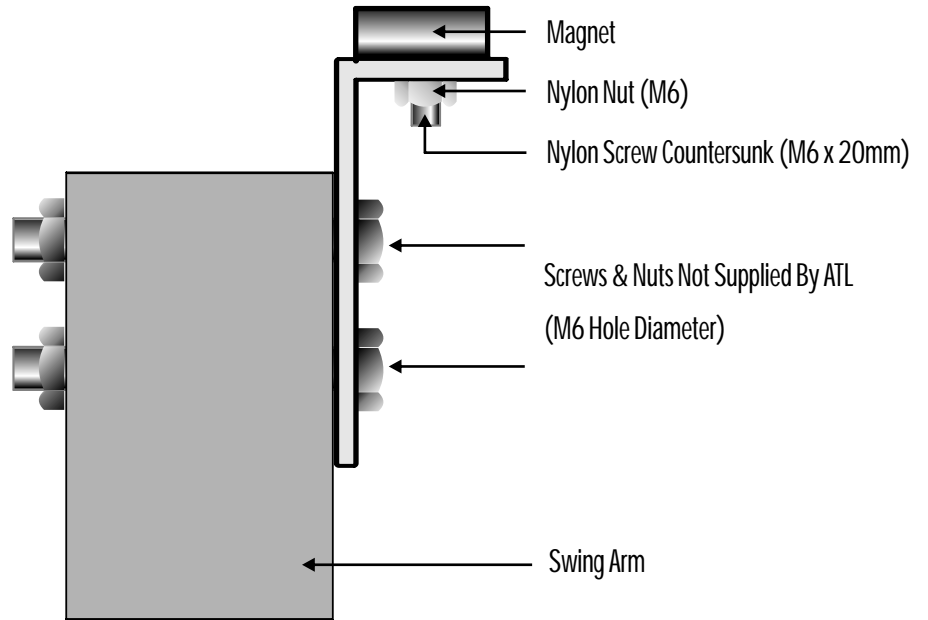
## Swing-To-Start Box Installation



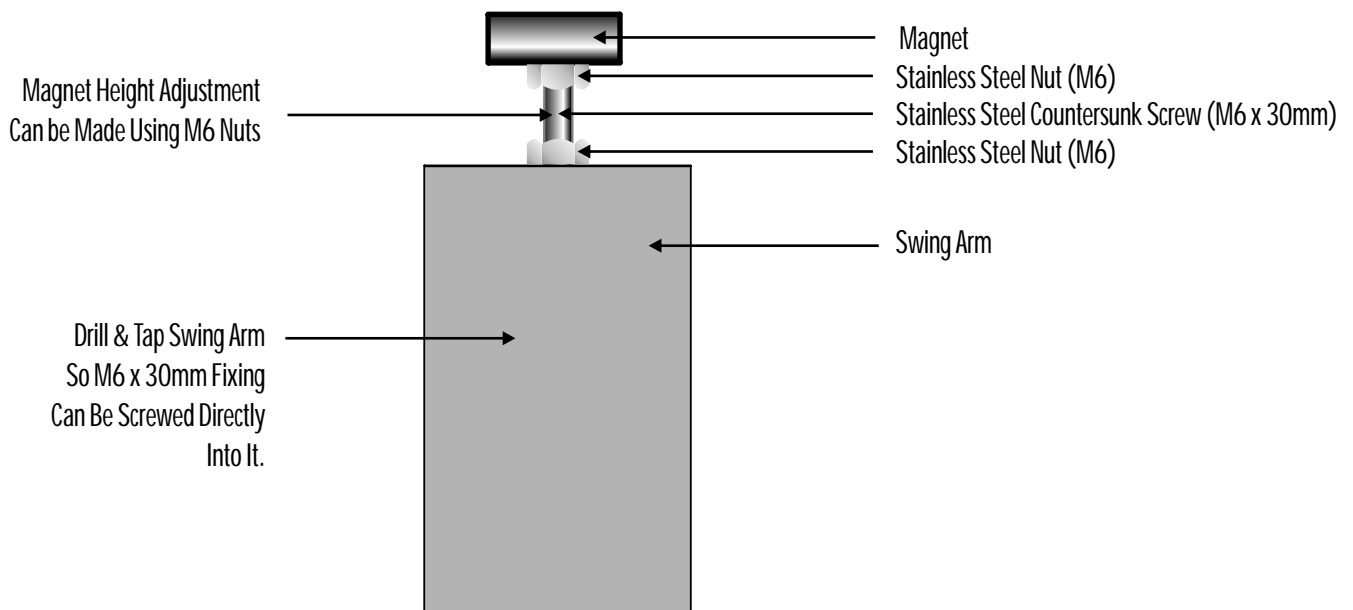


# SWING-TO-START BOX INSTALLATION MANUAL: 3

## Swing Arm Magnet with Bracket Installation



## Swing Arm Magnet without Bracket Installation





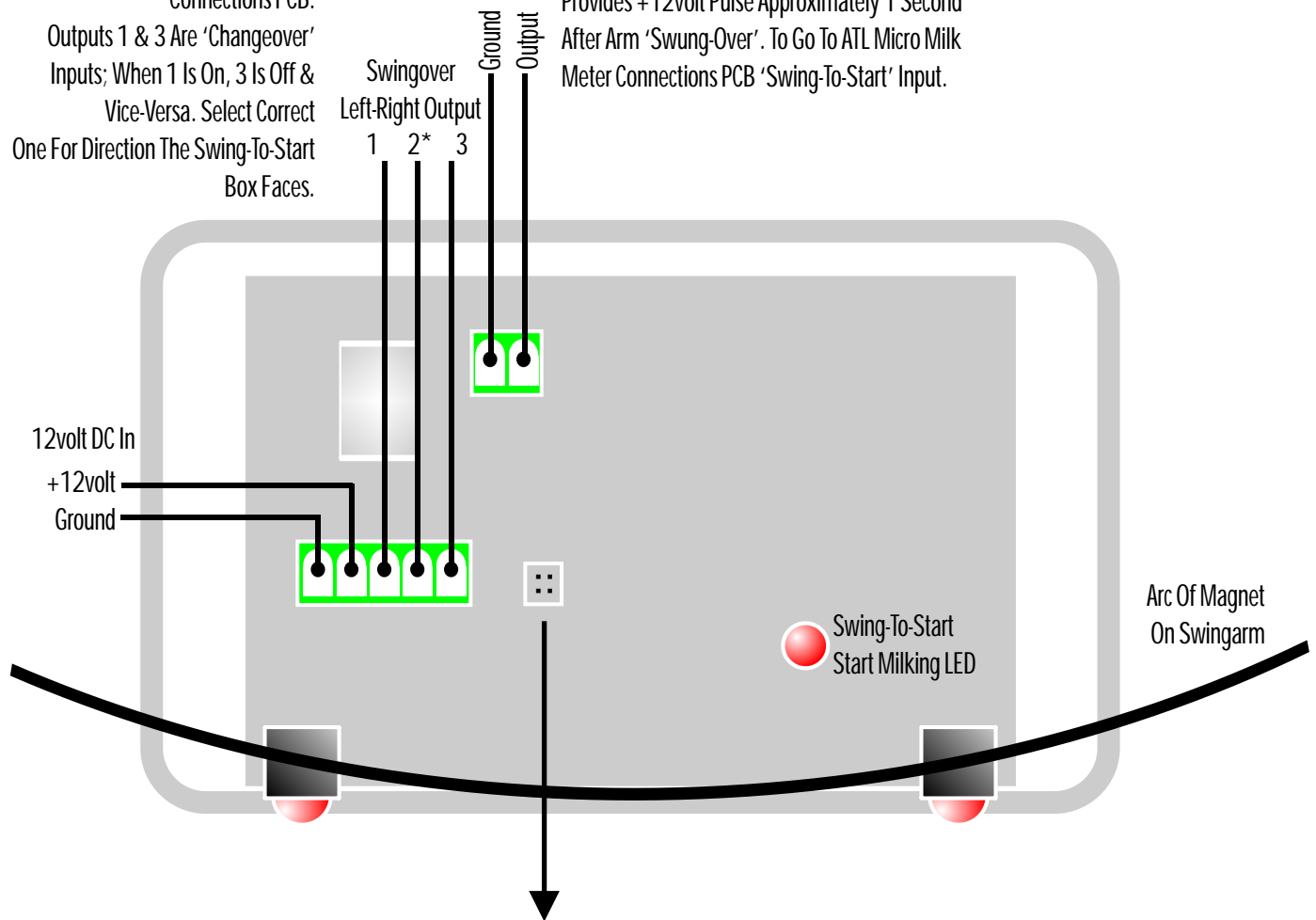
# SWING-TO-START BOX INSTALLATION MANUAL: 4

## Swing-To-Start Box Wiring 1

Use Either Output 1 or 3 To Go To  
Left-Right Input On Micro Milk Meter  
Connections PCB.

Outputs 1 & 3 Are 'Changeover'  
Inputs; When 1 Is On, 3 Is Off &  
Vice-Versa. Select Correct  
One For Direction The Swing-To-Start  
Box Faces.

Provides +12volt Pulse Approximately 1 Second  
After Arm 'Swung-Over'. To Go To ATL Micro Milk  
Meter Connections PCB 'Swing-To-Start' Input.



For Micro Milk Meter Systems  
On Swingover Parlour



Feeds +12volt DC To Relay To Give  
+12volt DC Output On Left & Right  
Outputs On 3-Way Connector (pins 1 & 3)

OR

For Milk Meter Interface System  
On Swingover Parlour



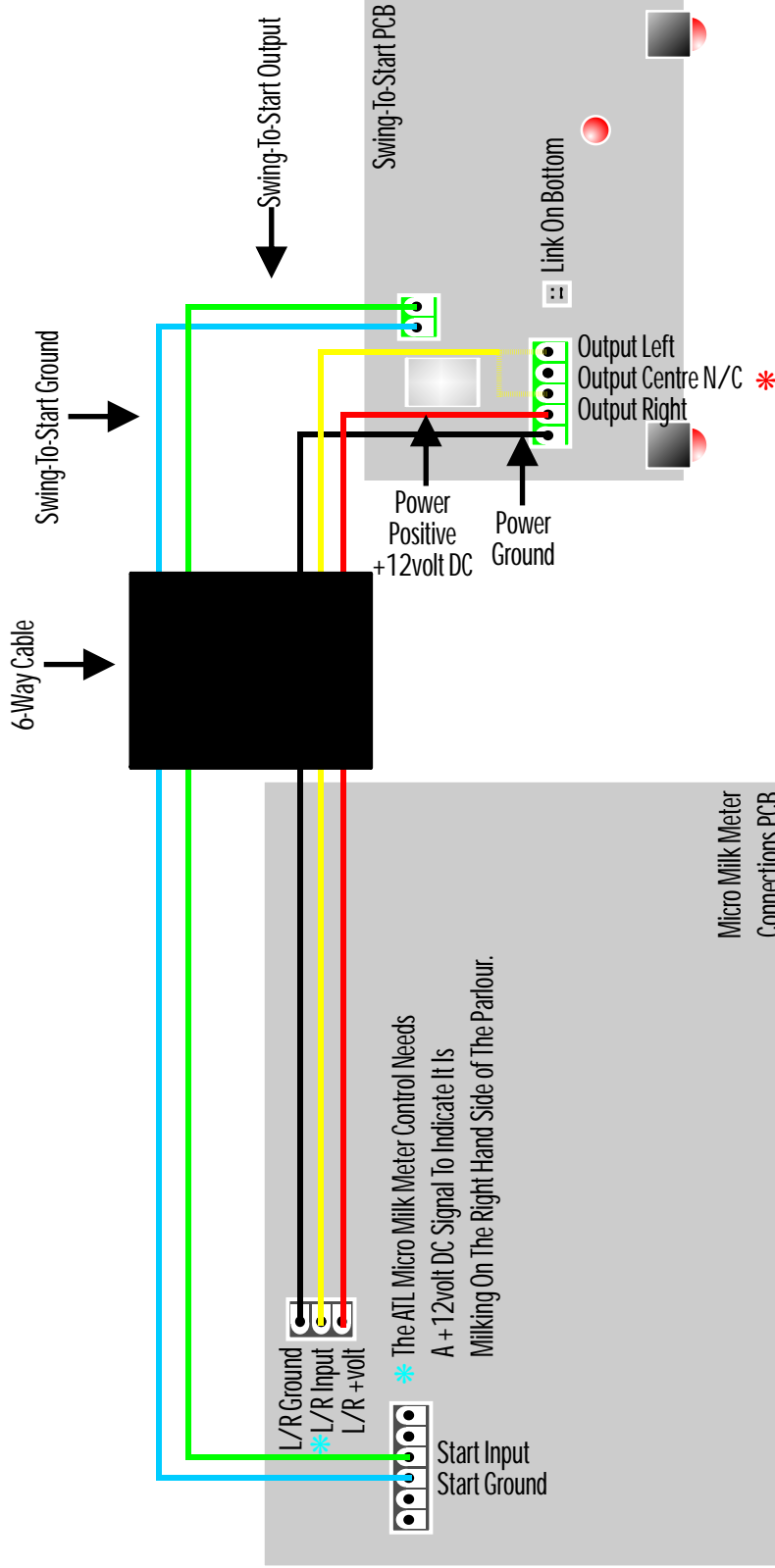
Leaves Centre Pin On 3-Way Connector  
Free For Routing Milk Meter Interface  
Signals Left & Right

\*Feed Competitor Milk Meter Solenoid  
Signal In Here To Route It To left Or Right  
On Output Pins 1 & 3.



# SWING-TO-START BOX INSTALLATION MANUAL: 7

## Swing-To-Start Wiring 2 Swing-To-Start Box To Micro Milk Meter Connections Box On ATL Micro Milk Meter System



- \* Link Into Pin 1 or Pin 3 As Appropriate To The Way The Box Faces In The Parlour.
- The ATL Micro Milk Meter Control Needs A +12volt DC Signal To Indicate It Is Milking On The Right Hand Side Of The Parlour.